



Prénom :

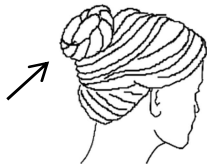
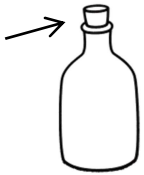
Date :

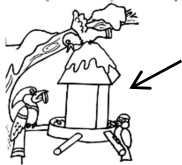
LES SONS [CH] ET [J]

1- **Entoure** les images en suivant le code couleur.  [ch] = BLEU  [j] = ROUGE




2- **Écris** les mots en utilisant les syllabes. **Dessine** la dernière image.






- gi
- chi
- geon
- chon
- mou
- ge
- choir
- geoi
- fe
- che
- re
- pla
- bou
- li
- man
- er
- bour
- gnon
- va
- ra

3- **Recopie** les phrases en ajoutant des mots de l'exercice 2.

J'aime beaucoup aller à la  .

Le  enfile son armure et son heaume.

LE N EN MAJUSCULE



.....